

MARK SCHEME for the May/June 2007 question paper

7010 COMPUTER STUDIES

7010/01

Paper 1, maximum raw mark 100

This mark scheme is published as an aid to teachers and candidates, to indicate the requirements of the examination. It shows the basis on which Examiners were instructed to award marks. It does not indicate the details of the discussions that took place at an Examiners' meeting before marking began.

All Examiners are instructed that alternative correct answers and unexpected approaches in candidates' scripts must be given marks that fairly reflect the relevant knowledge and skills demonstrated.

Mark schemes must be read in conjunction with the question papers and the report on the examination.

- CIE will not enter into discussions or correspondence in connection with these mark schemes.

CIE is publishing the mark schemes for the May/June 2007 question papers for most IGCSE, GCE Advanced Level and Advanced Subsidiary Level syllabuses and some Ordinary Level syllabuses.

Page 2	Mark Scheme	Syllabus
	GCE O LEVEL – May/June 2007	7010

1 (a) **virus** any **two** points from:

program/software
which replicates/copies itself
alters/damages files/alters files or data
e.g. examples of the effect of a virus

worm = 0
trojan horse = 0
name of virus = 0
bomb = 0

[2]

(b) **verification**

any **two** points from:

check on input for errors/checking before & after transfer
by double entry
on screen checking
comparing input/use of second operator
e.g. password typed in twice

proof reading = 0

[2]

(c) **interrupt**

any **two** points from:

a signal/request generated by a device/program
causes a break in execution of a program/stops program
e.g. printer out of paper

power cut = 0

[2]

(d) **simulation**

any **two** points from:

studying behaviour of a system
by using a model/represents real life/mathematical representation
results can be predicted
e.g. flight/other simulator, modelling hazardous chemical reaction

games = 0

[2]

(e) **electronic scabbing**

any **two** points from:

allows managers to switch ...
word processing/computer processing duties ...
from striking clerks in one country to non-striking clerks in another

[2]

Page 3	Mark Scheme	Syllabus
	GCE O LEVEL – May/June 2007	7010

2 Any **two** types from:
(1 mark for naming type of test data. 1 mark for description or suitable example)

Normal - acceptable/valid data
- data has expected outcomes
- example (e.g. day of month 1 to 31) needs context, range OK

Abnormal - data outside limits of acceptability/validity
Erroneous - example (e.g. day of month -1, 50, etc.)

Extreme - data at limits of acceptability/validity
Boundary - example (e.g. day of month 1, 31, etc.)

[4]

3 **Two** points **one** from each group:

speech recognition is a form of input;
speech recognition requires a microphone;
speech recognition is an example of an expert system

speech synthesis is a form of output
speech synthesis requires speakers
in speech synthesis words are chosen from a database

[2]

4 Any **three** points from:

- file management
- input/output control/peripheral management
- spooling
- memory management
- multitasking/JCL/batch processing
- multiprogramming
- handling interrupts
- error reporting/handling
- security
- interfaces with users/WIMP type interfaces
- loads/runs programs
- processor management
- manages user accounts
- copy/save/format/DOS utilities

resource management = 0

[3]

Page 4	Mark Scheme	Syllabus
	GCE O LEVEL – May/June 2007	7010

5 (i) Any **one** advantage and any **one** disadvantage from:

advantages

- no travel (∴ saves money)
- no time wasted in travelling
- more time for family life
- more flexible working hours
- equal opportunities for all
- more motivated (**)

disadvantages

- too many distractions
- less social interaction with others
- less visible status for senior employees

(ii) Any **one** advantage and any **one** disadvantage from:

advantages

- lower overheads (no offices)
- more flexible/contented (**)
- work force
- easier to employ disabled people
- workers can be anywhere in the world
- can tap into world wide expertise
- (** - only allow in (i) OR (ii) not both)

disadvantages

- less control over work force
- could be doing work for more than one company
- difficult to get company loyalty
- more difficult to react quickly to changing situations

[4]

6 One mark for name and one mark for description

Data flow diagrams - describes data input/output into the system
- shows what happens to data within the system (during processing and storage)

Modules/Structure Diagrams/ - shows logic behind program structure
- allows task to be split into individual parts
- shows links in modules

(Systems) flowcharts/ diagrams - shows hardware
- shows how hardware links
- shows how processes are carried out

Gantt/Pert charts (critical path analysis) - shows each stage with deadlines/milestones

[2]

Page 5	Mark Scheme	Syllabus
	GCE O LEVEL – May/June 2007	7010

7 (a) Any **three** points from:

- deskillling
 - retraining needed
 - loss of jobs
 - frees staff from admin jobs
 - less time wasted looking for lost paperwork
- [3]

(b) Any **two** from:

- passwords (changed regularly)
 - use of ids/log on ids/user names
 - firewalls
 - physical measures (e.g. locked rooms)
 - logging off after use
- encryption = 0
removal of external memory = 0
- [2]

(c) Any **one** point from:

- use of back up files
 - generations of files (GFS)
- [1]

- (d) amend - change name/address/doctor etc. change of age = 0
 - new illness
 - re-admission
- delete - patient leaves area/country leaves hospital = 0
 - patient dies
- insert - new patient arrives
 - new baby born
- [3]

8 (a) Any **two** from:

- transfer images directly to computer (no need to scan in)
 - can easily wipe photos from memory
 - view pictures immediately
 - adjust pictures immediately
 - store more pictures in less space
- video possible = 0
- [2]

(b) Any **one** point from:

- number of pixels/memory size
 - the sensor (determines number of pixels)
- [1]

Page 6	Mark Scheme	Syllabus
	GCE O LEVEL – May/June 2007	7010

- 9 (a) 7
5
- (b) 10110110 [1]
- (c) Any **three** points from:
Notes lift is going down
Notes required floor is less than present floor
Sorts remaining numbers into descending order of floors [3]
- 10 (a) (i) Any cell in the range A2:D6
(ii) Any cell in the range A1:F1, C7, D7 [2]
- (b) $(B2*5) + (C2*10) + (D2*20)$
(-1 for each error) NB Brackets not needed [2]
- (c) Any **two** points from:
Highlight/select E2/copy E2
paste into cells E3 to E6
(or equivalent (select + sign) using drag and drop, for example) [2]
- (d) $SUM(E2:E6)$
 $E2 + E3 + E4 + E5 + E6$ [1]
- (e) N [1]

Page 7	Mark Scheme	Syllabus
	GCE O LEVEL – May/June 2007	7010

11 (a) 2
4
1

(b) (i) Any **one** point from:

computer check on input data
detects any data which is incomplete or not reasonable

check data is wrong/correct = 0

(ii) Any **one** point from:

length check – e.g. only 30 characters in name field
character check – e.g. name doesn't contain numeric chars
range check – e.g. day of month in date is between 1 and 31
format check – e.g. date in the form xx/yy/zz
check digit – e.g. end digit on bar code to check if it is valid
type check – e.g. integer, real
(presence check = 0)

[2]

12 Any **three** points from: (NB if disability mentioned, shouldn't conflict with method/device)

large/concept keyboards/switches
braille keyboards (for partially sighted/blind)
tracker ball to move pointer if keyboard/mouse can't be used
touch screens (using head wands)
software to predict words (e.g. for dyslexic people)
speech recognition
foot activated control (if no arm movement)
large icons/fonts on screens (– if partially sighted)
braille printers
speech synthesis
large screen
choice of colours

speakers = 0

[3]

Page 8	Mark Scheme	Syllabus
	GCE O LEVEL – May/June 2007	7010

13 (a) Any **two** advantages from:

- know prices of each item/check errors
- proof of purchase
- can check totals themselves
- can check items

[2]

(b) Any **two** ways from:

- using bar code reader/scanner/wand/gun to read bar code
- key in/type in/enter manually the number under the bar code

laser = 0

light pen = 0

[2]

(c) Any **three** points from:

- bar code read
- item identified on the file
- number of items reduced by 1 each time item is sold
- when new item come in/returned stock level increased by 1
- minimum stock level stored on file
- if stock level less than minimum/reorder level ...
- ... automatic re-ordering done

alert that stock low = 0

[3]

14 (a) 9

[1]

(b) 1023, 1911, 3456, 2516

(-1 for each ref number missing or for each incorrect ref number)

[2]

(c) Ignore case, comma 7
(Price(\$)) > 60000) AND (0-100 kph time (sec) < 7.0)

<----- 1 mark ----> <----- 1 mark ----->

(0-100 kph time (sec) < 7.0) AND (Price(\$)) > 60000)

<----- 1 mark -----> <----- 1 mark ----->

[2]

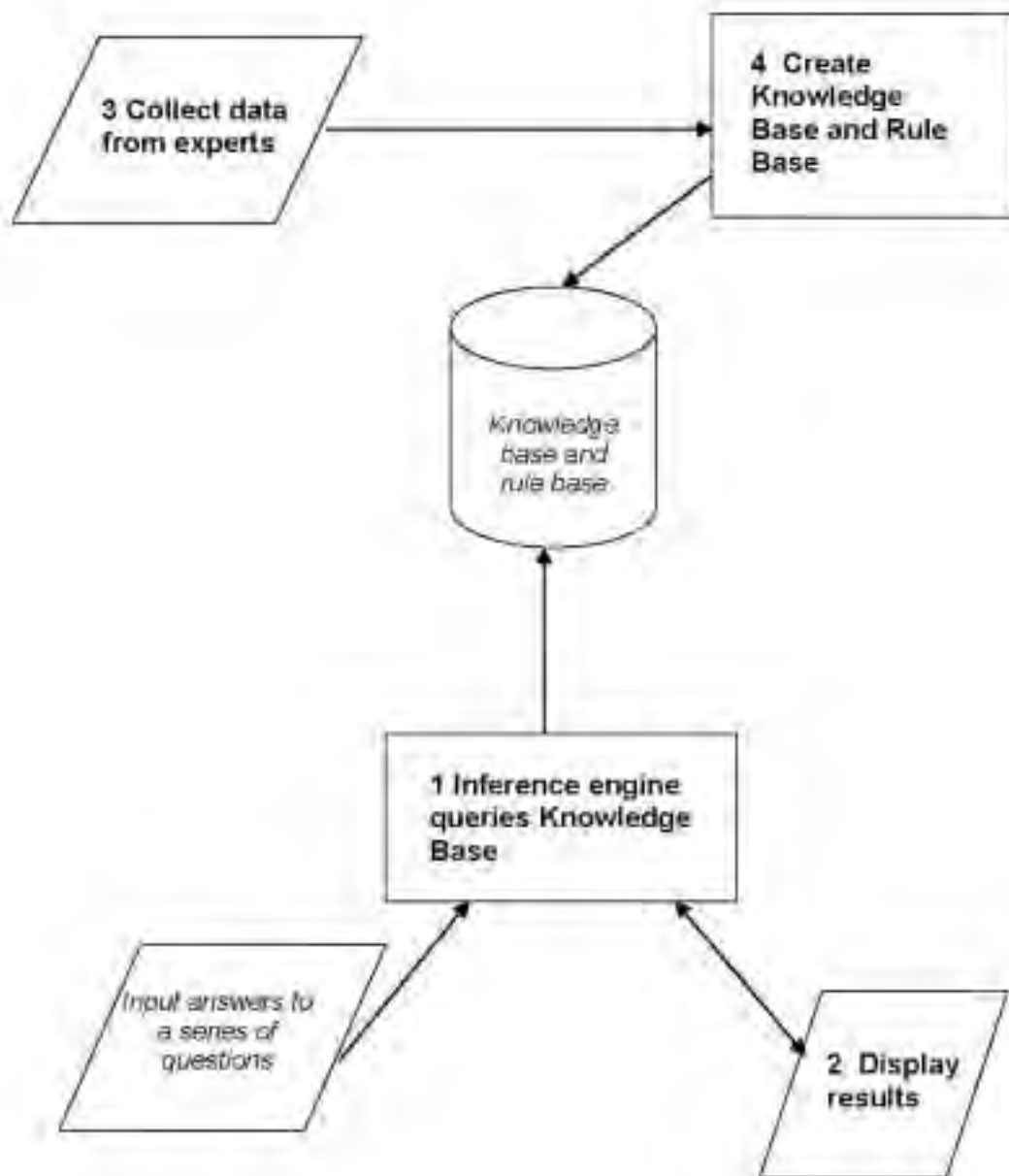
(d) Any **two** points from:

- bigger audience/world wide audience
- no need to advertise in the press (∴ cheaper)
- can have automatic replies to customers
- open 24/7

no showroom = 0

[2]

15 (a) 1 for each correct box max 3



(b) Any **one** point from:

- multiple choice questions
- yes/no answers
- takes user through the possible options
- touch screen with options

[1]

(c) Any **one** point from:

- possible faults
- % probability of the fault

[1]

Page 10	Mark Scheme	Syllabus
	GCE O LEVEL – May/June 2007	7010

(d) Any **one** from:

- e.g.
- chess
- oil/mineral prospecting
- tax/financial calculations
- medical diagnostics
- speech recognition
- rock identification

[1]

16 (a) Any **two** sensors from:

- airflow (mass of air)
- oxygen/gas sensor
- throttle/accelerator position/potentiometer
- temperature
- voltage
- (manifold) pressure
- (engine) speed
- fuel level = 0
- heat sensor = 0
- thermometer = 0

[2]

(b) Any **three** points from:

- data from sensors fed to ADC
- data is fed continuously (loop)
- ADC converts data to digital form and sends information to ECU
- ECU has been programmed/stored with key values/data
- information from sensors compared with stored data
- signals sent to injectors to alter their operation as required
- reference to need for DAC
- reference to need for actuators

[3]

(c) Any **one** point from:

- environment (exhaust gases controlled)
- (better) fuel economy/more efficient
- fewer moving parts
- doesn't go "out of tune"
- fuel injection more accurate
- improved engine life = 0

[1]

(d) Any **one** point from:

- requires an immediate response
- needs to be on-line

[1]

Page 11	Mark Scheme	Syllabus
	GCE O LEVEL – May/June 2007	7010

17 Any **three** features from:

- links to associated resources possible within text (hyperlinks)
- hot spots – in pictures/maps
- forward/back buttons – allows review of resources
- favourites – maintains links to resources between sessions
- history – previous searches for example
- refresh – updates pages for example
- filters – takes out unwanted information for example

[3]

18 (a) Any **two** advantages from:

- huge amount of information
- information is constantly updated
- immediate access to information from research papers
- use of search engines
- e-mail facilities give access to world experts

Any **one** disadvantage from:

- need to know how to do searches properly
- bad searches can give wrong or irrelevant information
- unknown reliability
- likely to download virus
- phone lines engaged if not using broadband (OK if not given in **(b)**)
- (open to) fraud/hacking while on line

[3]

(b) Any **one** point from:

- very fast transfer (ideal for video clips) speed of internet connection = 0
- always “on” (no need for dial up)
- not metered
- telephone lines not tied up/don’t need extra lines (if not given in **(a)**)

[1]

(c) Any **one** benefit from:

(NOT advantages of laptop computers)

- no trailing wires
- can sit anywhere within the room

Any **one** disadvantage from:

- slower transmission speed
- range is limited
- security problems
- health problems

[2]

Page 12	Mark Scheme	Syllabus
	GCE O LEVEL – May/June 2007	7010

19 General marking points:

- loop – 1 mark
- input in correct place – 1 mark
- checks on code – 1 mark
- correct use of **if/then/else** or **case** statements – 1 mark
- increment all totals – 1 mark
- error recognition/validation – 1 mark
- correct output in correct place – 1 mark

[5]

Sample program 1:

```
set c, d, v, b = 0: set count = 0
repeat                                     1 mark
  input code                               1 mark
  x = code/10000                           }
  y = INT(x)                               } 1 mark
  if y = 1 then c = c + 1                   }
  else if y = 2 then d = d + 1              }
  else if y = 3 then v = v + 1              } 2 marks
  else if y = 4 then b = b + 1              }
  else print "error"                       } 1 mark
  count = count + 1
until count = 5000
print c, d, v, b                           1 mark
```

Sample program 2:

```
set c, d, v, b = 0: set count = 0
repeat                                     1 mark
  input code                               1 mark
  if code >= 1000 and code < 2000 then c = c + 1 }
  else if code >= 2000 and code < 3000 then d = d + 1 }
  else if code >= 3000 and code < 4000 then y = y + 1 } 3 marks
  else if code >= 4000 and code < 5000 then b = b + 1 }
  else print "error"                       } 1 mark
  count = count + 1
until count = 5000
print c, d, v, b                           1 mark
```

(NOTE – OK to use statements such as *if code begins with a 1* as code checks)